



EMENEM  **INDUSTRIAL**
AUTOMATION SOLUTION PROVIDER
Company Profile
2026

A collage of images showing industrial workers in a factory setting. Some are working at computer workstations, while others are engaged in manual tasks. The scene is brightly lit, typical of a modern manufacturing environment.

Welcome to

EMENEM INDUSTRIAL

AUTOMATION SOLUTION PROVIDER

For more than 30 years, Emenem has been delivering high-quality, cost-effective manufacturing and engineering solutions tailored to the unique needs of every client. Built on a foundation of technical excellence, reliability, and innovation, we've earned a reputation as one of South Africa's leading industrial automation and turnkey service providers, with projects extending beyond our borders.

Our skilled team combines decades of hands-on experience with cutting-edge technology to ensure every project is executed to the highest standards. From concept to completion, we're committed to exceeding expectations, delivering results that drive performance, efficiency, and growth.

Whether you require custom-engineered solutions or ready-to-implement systems, Emenem has the expertise and capacity to bring your vision to life. Our comprehensive capabilities include injection molding, blow molding, extrusion, and complete automation integration, among others.

At Emenem, we don't just manufacture, we engineer progress. Let's work together to shape the future of your business.



EMENEM  **INDUSTRIAL**
AUTOMATION SOLUTION PROVIDER

TABLE OF CONTENTS

Who are we?	4
What we do	5-9
Management Team	10
Admin & Finance Team	10
Installation team	11-12
PM partners	13
Some of our clients	14
Contact us	15
Some of our work	16-20



Who are we?

Founded by Rene Venter, Emenem Industrial is a South African-based company delivering comprehensive turnkey solutions and system integration services across diverse industrial sectors. Since our inception in 2003, we have achieved consistent year-on-year growth, establishing ourselves as one of South Africa's leading industrial automation companies.

At Emenem, we believe that progress starts with people and innovation. That's why we invest heavily in training our personnel and testing new technologies to stay aligned with international standards. This commitment ensures that our clients benefit from the most advanced, reliable, and efficient automation solutions available.

Our mission is simple: to deliver superior projects that meet the highest standards of quality, on time and within budget. We strive to provide value-driven solutions without compromising craftsmanship, because we believe that quality is priceless.

Built on a foundation of honesty, transparency, and technical expertise, Emenem Industrial takes pride in its skilled and experienced team. Our unwavering dedication to trusted workmanship and ethical business practices has fostered long-standing relationships with clients and partners alike.

As we continue to embrace the evolving era of automation and industrial innovation, Emenem Industrial remains committed to delivering excellence, driving efficiency, and shaping the future of smart manufacturing.

What we do.

At Emenem Industrial, we specialize in providing end-to-end automation solutions designed to address our clients' most complex challenges. Our approach is rooted in innovation, practicality, and precision, staying at the forefront of emerging technologies and applying them to create effective, real-world solutions.

We offer comprehensive turnkey services, managing every stage of a project from conceptual design to full operational readiness, so that when our clients are ready, their systems are too, at the push of a button.

Our capabilities span a wide range of disciplines, including:

- Conceptual, mechanical, and electrical design
- Machine building and construction
- Supply and installation of field devices
- PLC, HMI, and SCADA programming and integration
- Electrical cabinet design, build, testing, and installation
- System integration and commissioning
- Vision and inspection camera systems
- Hydraulic and pneumatic systems
- C.O.C certification
- Machine rigging and turnkey project execution
- Solar installations
- Imports, exports, and HT switching & installations

With extensive experience across multiple industries, we understand the unique demands of each sector we serve. Our team combines technical expertise with a deep commitment to quality and innovation — ensuring that no matter our clients' goals, we turn them into reality.

What we do.

Carpet Molding and Forming Lines

Our expertise in Carpet Molding and Forming Lines has been at the core of Emenem Industrial's operations for most of our existence. We proudly provide PLC and SCADA programming services to our German partner, JH Hollmann, supporting projects across Germany, the Czech Republic, England, and most recently, Mexico.

The continued demand for our programming expertise from international partners reflects our alignment with European quality standards and the world-class capability of our programming team.

Robotics

As a trusted automation partner in the automotive sector, a large portion of our work integrates seamlessly with robotic systems. From custom-built to standard robotic solutions, we collaborate with leading names such as ABB, Yaskawa, Van Hoek, and Fanuc. Our long-standing partnership with ABB has resulted in multiple successful projects, combining their robotic systems with our engineered machinery for fully integrated, high-performance automation.

Custom Machine Design

Most of our projects are custom-engineered to meet specific client requirements. We manage the entire process in-house, from concept and design to development, manufacturing, and commissioning. With a combined 60+ years of PLC programming experience, our engineering team is highly skilled in overcoming complex automation challenges. Every machine we design complies with international safety standards, ensuring both performance and operator protection.

We also specialize in track and trace systems, delivering tailored solutions to meet our clients' traceability and production monitoring needs.



What we do.

Hydraulic Presses

Through our partnership with JH Hollmann, one of the world's leading German hydraulic press manufacturers, we deliver high-performance presses ranging from 50 tons to 2500 tons.

Each press is designed and built in Germany to the highest quality standards and offered at a competitive price point.

All PLC and HMI programming for these presses is completed locally by Emenem Industrial, enabling us to provide responsive on-site support, fault-finding, and system modifications when required.

Fully Integrated Systems

Emenem Industrial is a certified System Integrator for SICK Automation, Festo, and SEW Eurodrive — and a local distributor of their products.

Our team receives continuous training to ensure fast, efficient solutions using the latest technologies.

With stock on hand for many commonly used automation components, we are able to respond rapidly to breakdowns and minimize production downtime.

Piping Installations

We provide complete piping installation services — including water, chilled water, chemical, gas, and air lines, in full compliance with SANS standards.

Our capabilities include installation using copper, PVC, UPVC, galvanized, mild steel, and stainless steel pipes, joined via welding, flanges, or threading depending on client requirements.

We perform pipeline flushing, pressure testing, and certification (C.O.C) to ensure system safety and performance.



What we do.

Vision Systems

With growing demand for quality assurance and precision inspection, we provide advanced Vision System solutions.

In collaboration with SICK Automation and Cognex, we design and integrate systems capable of inspecting a wide range of parameters including color, shape, barcode verification, material detection, and assembly validation, ensuring superior quality control and production accuracy.

Electrical Reticulation

Our electrical division covers everything from cable tray installation and power distribution to distribution board construction, substation wiring, and complete line installations.

All work adheres strictly to SANS standards, and we provide a Certificate of Compliance (C.O.C) upon completion.

We also design and implement power factor correction systems to improve energy efficiency and reduce electrical costs, helping clients achieve sustainable operations.

PLC Design, Building and Schematics

With years of hands-on experience, our team delivers professionally built PLC panels and precision electrical schematics.

We use E-Plan design software to create clear, compliant, and user-friendly electrical diagrams, accessible digitally through E-Plan Mobile View for convenient, paperless reference.

A well-organized panel design ensures faster fault-finding and long-term maintainability for our clients.



What we do.

Mechanical and Engineering

Our mechanical and engineering department provides expert design, drafting, and precision machining for all our machines.

Every project is backed by extensive research and proven engineering principles, ensuring optimal performance and reliability.

Clients can expect precision-engineered machines and mechanical solutions that meet the highest international standards.

Additional Services

- Consulting
- Project Management
- Underground Cable Fault Location
- Panel Building
- Load Testing
- Pick-by-Light Systems
- Electrical and Automation Supplies
- Mimic Panels
- Vacuum Solutions
- C.O.C Certification

Health and Safety

Safety is at the heart of everything we do. Emenem Industrial strictly adheres to the latest Health and Safety regulations, ensuring a secure working environment for both our teams and our clients. Our proactive approach minimizes risks and maintains our commitment to operational excellence.



Meet The Team



Management Team

Rene Venter

Director

Millwright

PLC, HMI and SCADA Programmer

E-Plan Electrical Designs

Safety Development

Christiaan Liebenberg

Software/Electrical/Automation Manager

PLC Programmer

Sick Automation Product Specialist

Sick Product Programmer

Robotics

Siemens Product Specialist

Ernst Strydom

Managing Director

Millwright

Pneumatics

Project Manager

Consultation

Edwin van Wyngaardt

Mechanical Manager

Boilermaker

General Supervisor

Machine Installations

On-Site supervisor

Project Leader

Admin & Finance Team

Carin Jacobs

PA to Mr Venter & Strydom

HR

Debtors & Creditors

Financial Office

Information Officer

Latasha van Wyngaardt

Administrative assistant

Procurement

Johan van Wyngaardt

SHE Representative

ISO 90001 Representative

Hester De Wit

Procurement Specialist

Seeiso Rannyama

Marketing Admin

Graphic Designer

Motion Graphic Designer

Digital Marketing

Web Design, maintenance & SEO

Social media manager

Deputy Information Officer

Meet The Team

Automation

Installation Team

Francois Van Jaarsfeld

Electrical Installations
Manager/Engineer
Millwright
Wireman's License (C.O.C)
Electrical Installations
Machine Installations
Hydraulics

Markus Venter

Millwright
PLC Programming
Camera Specialist
Program Developer

Gavin Wolmarans

Millwright
Control Pannell Building
Machine Installations
Electrical Installations

Theo Malan

Millwright Apprentice
Control Panel Building
Machine Installations
Electrical Installations
Machine Installations
Electrical Installations

Mpho Mabogoane

Driver
General Worker

Phillemon Nyoni

Cleaner

Ruan Dellemyn

Millwright
Project Leader
Machine Installations
Robotics
Project Manager

Stephan Schutte

Millwright
Control Panel Building
Machine Installations
Electrical Installations

Alwyn De Wet

PLC Programme Developer
Machine Installations
Electrical Installations

Johan Potgieter

Electrical Apprentice
Control Panel Building
Machine Installations
Electrical Installations

Thinus Jacobs

Electrical Apprentice
Control Panel Building
Machine Installations
Electrical Installations

Thabiso Mtimunye

Driver

Meet The Team



Mechanical

Installation Team

Ettienne van Deventer

Mechanical Engineer
Solid Works Designer
Design Specialist
Pneumatic Designer

Isaac Sithole

Welder (Gas metal arc, Gas tungsten, CO2)

Cofius Zevezeve

General worker
Painter

Kgothatso Chauke

General Worker

Joel Tlou

General Worker

Cocktail Murovhi

General Worker

Phillimon Tlhapu

Site Supervisor

Hannes van Wyngaardt

Workshop Supervisor
Project Leader
Manufacturing Supervisor

Tshepo Mogotsi

Welder (Gas metal arc, Gas Tungsten, CO2)

Hans Nagel

Fitter and Turner

Tuki Moremi

Fitter and Turner

John Kruger

General worker
Driver

**PROJECT
MANAGEMENT
PARTNERS**

EMENEM  **INDUSTRIAL**
AUTOMATION SOLUTION PROVIDER

**JH Hollman
SB Electrical
W.LEE Ultraplast
S&S Projects
Probotics
Lavoro Electrical
I/O Dynamics
SAR
OM-I 3D Engineering
Emenem Projects**

Contact Us



Our address:
Unit 7 Aquilla Park
197 Lever Road
Rosslyn
0200
Pretoria

Ernst Strydom
082 570 8093
ernst@emenem.co.za

Christiaan Liebenberg
083 321 0078
chris@emenem.co.za

www.emenem.co.za



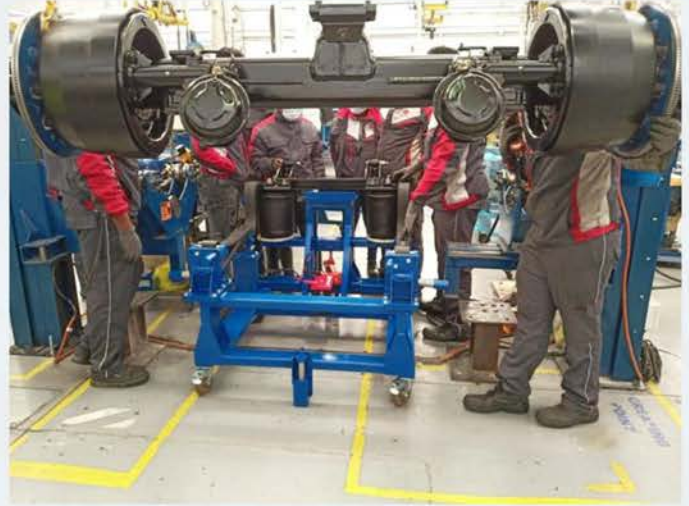
SOME OF OUR CLIENTS



African Explosives Limited



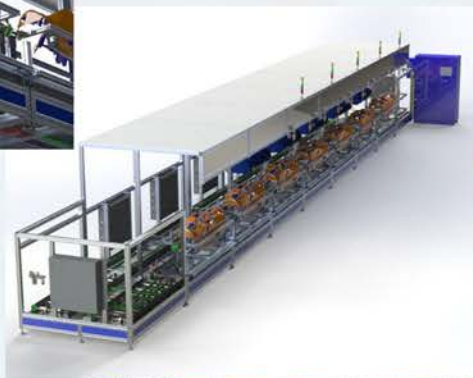
Some of our work



Some of our work



**Some of our
work**



Some of our work

