

EMENEM  INDUSTRIAL
AUTOMATION SOLUTION PROVIDER

COMPANY PROFILE 2024



WELCOME!

WELCOME TO EMENEM, YOUR TRUSTED PARTNER FOR ALL YOUR MANUFACTURING NEEDS! AT EMENEM, WE ARE COMMITTED TO PROVIDING OUR CLIENTS WITH HIGH-QUALITY AND AFFORDABLE MANUFACTURING SOLUTIONS THAT ARE TAILORED TO THEIR UNIQUE REQUIREMENTS.

WITH OVER 30 YEARS OF EXPERIENCE IN THE INDUSTRY, WE HAVE DEVELOPED A REPUTATION FOR EXCELLENCE AND RELIABILITY, AND WE ARE PROUD TO BE RECOGNIZED AS A LEADING MANUFACTURER OF QUALITY PRODUCTS IN SOUTH AFRICA. OUR TEAM OF SKILLED PROFESSIONALS IS DEDICATED TO ENSURING THAT EVERY PROJECT WE UNDERTAKE IS COMPLETED TO THE HIGHEST STANDARDS, AND WE STRIVE TO EXCEED OUR CLIENTS' EXPECTATIONS WITH EVERY ORDER.

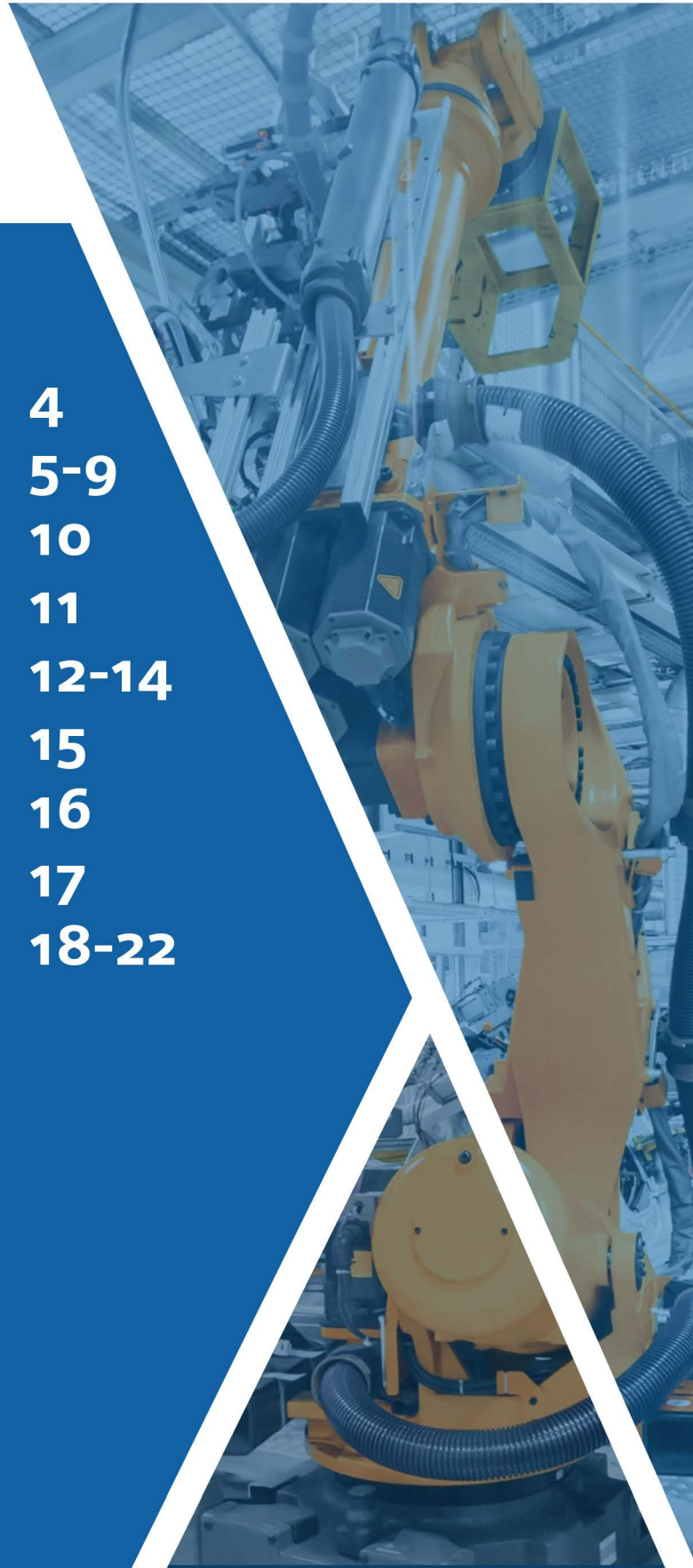
WHETHER YOU ARE LOOKING FOR CUSTOM-DESIGNED PRODUCTS OR OFF-THE-SHELF SOLUTIONS, WE HAVE THE EXPERTISE AND RESOURCES TO DELIVER EXACTLY WHAT YOU NEED. WE SPECIALIZE IN A WIDE RANGE OF MANUFACTURING SERVICES, INCLUDING INJECTION MOLDING, BLOW MOLDING, AND EXTRUSION, AMONG OTHERS.

THANK YOU FOR CONSIDERING EMENEM AS YOUR MANUFACTURING PARTNER. WE LOOK FORWARD TO WORKING WITH YOU AND HELPING YOU ACHIEVE YOUR BUSINESS GOALS.



TABLE OF CONTENTS

WHO ARE WE?	4
WHAT WE DO	5-9
MANAGEMENT TEAM	10
ADMIN & FINANCE TEAM	11
INSTALLATION TEAM	12-14
PM PARTNERS	15
SOME OF OUR CLIENTS	16
CONTACT US	17
SOME OF OUR WORK	18-22



WHO ARE WE?

EMENEM INDUSTRIAL WAS FOUNDED BY RENE VENTER AND IS A SOUTH AFRICAN-BASED COMPANY PROVIDING FULL TURNKEY SOLUTIONS AND INTEGRATING A WIDE VARIETY OF SYSTEMS SINCE 2003.

SINCE 2003 EMENEM INDUSTRIAL HAS GROWN YEARLY TO BECOME ONE OF THE LEADING AUTOMATION COMPANIES. WE INVEST A LOT OF TIME IN TRAINING OUR PEOPLE, AND TESTING NEW TECHNOLOGIES, TO KEEP UP WITH INTERNATIONAL STANDARDS AND TO GIVE OUR CLIENTS THE BEST-AUTOMATED SOLUTIONS AND SERVICES POSSIBLE.

IT IS OUR MISSION TO PROVIDE SUPERIOR PROJECTS WITH THE HIGHEST QUALITY STANDARDS WHILE KEEPING TO THE PROJECT TIMELINE. WE STRIVE TO REDUCE COST AND DELIVER VALUE FOR MONEY WHILE DEVELOPING OUR EMPLOYEE SKILLSET. (YOU CAN'T ALWAYS PUT A PRICE ON QUALITY).

WE RESPECT HONESTY AND STRIVE TO ALWAYS DO BUSINESS OPENLY AND CLEARLY.

WITH OUR MANY YEARS OF COMBINED EXPERIENCE, WE HAVE A HIGHLY SKILLED TEAM AND TRUSTED WORKMANSHIP IS GUARANTEED. WITH THE NUMBER OF OUR SUCCESSFUL PROJECTS, CLIENT RELATIONS, APPROACH, PROFESSIONAL WORK, AND ETHICS WE BUILD VERY GOOD RELATIONSHIPS WITH OUR CLIENTS, AND WE WILL BE LEANING INTO THE NEW AGE OF AUTOMATION AND MAINTENANCE WORK.

WHAT WE DO

WE ARE AN AUTOMATION SOLUTION PROVIDER COMPANY, WHICH MEANS THAT WE PROVIDE SOLUTIONS TO OUR CLIENT'S CHALLENGES. THIS INVOLVES KNOWING AND UNDERSTANDING THE LATEST TECHNOLOGIES, AND HOW TO APPLY THEM PRACTICALLY TO ACHIEVE A SOLUTION FOR WHATEVER THE CHALLENGE MAY BE.

WE SUPPLY FULL TURNKEY SOLUTIONS, STARTING WITH A CONCEPTUAL DESIGN, AND ENDING UP WITH THE CLIENT PUSHING A BUTTON TO START THE CYCLE. THIS ENTAILS ALL THE FOLLOWING PROJECT COMPONENTS:

- CONCEPTUAL DESIGN.**
- MECHANICAL DESIGN.**
- ELECTRICAL DESIGN.**
- BUILDING AND CONSTRUCTION OF MACHINES.**
- SUPPLY AND INSTALLATION OF ALL FIELD DEVICES ON THE MACHINE.**
- DEVELOPING PLC AND HMI PROGRAMS.**
- DEVELOPING SCADA PROGRAMS.**
- BUILDING, TESTING AND INSTALLING THE ELECTRICAL CABINETS.**
- INTEGRATING ALL SYSTEMS.**
- VISION CAMERA SYSTEMS.**
- INSPECTION CAMERA SYSTEMS.**
- COMMISSIONING OF MACHINES OR SYSTEMS.**
- HYDRAULIC INSTALLATIONS.**
- PNEUMATICS.**
- C.O.C CERTIFICATION.**
- RIGGING OF MACHINES.**
- FULL TURNKEY PROJECTS.**
- SOLAR INSTALLATIONS.**
- IMPORTS/EXPORTS.**
- HT SWITCHING AND INSTALLATIONS**

WE HAVE DONE PROJECTS IN A VERY WIDE VARIETY OF INDUSTRIES, WHICH GIVES US VAST EXPERIENCE IN THE AUTOMATION AND PROCESS SECTORS. WHATEVER THE CLIENTS' DREAMS MAY BE, WE WILL MAKE THEM A REALITY.

CARPET MOLDING AND FORMING LINES

WE HAVE EXTENSIVE EXPERIENCE WITH CARPET MOLDING AND FORMING LINES, AS THIS HAS BEEN OUR CORE BUSINESS FOR MOST OF OUR COMPANY'S EXISTENCE. WE ALSO DO PLC AND SCADA PROGRAMMING FOR OUR GERMAN PARTNER COMPANY, JH HOLLMANN IN COUNTRIES OVERSEAS. WE HAVE DONE PROJECTS FOR THEM IN GERMANY, THE CZECH REPUBLIC, ENGLAND AND OUR LATEST ONE, IN MEXICO. THE FACT THAT WE ARE ASKED TO DO PLC AND SCADA PROGRAMMING FOR EUROPEAN COMPANIES SHOWS THAT WE ARE ON STANDARD WITH THEIR REQUIREMENTS AND THAT WE HAVE SOME OF THE BEST PROGRAMMERS AVAILABLE.

ROBOTICS

AS A LEADING AUTOMATION COMPANY IN THE AUTOMOTIVE INDUSTRY, MANY OF OUR MACHINES INTEGRATE WITH ROBOTS. FOR YOUR CUSTOM OR SIMPLISTIC ROBOTIC NEEDS, WE CAN PROVIDE A SOLUTION AS WE HAVE A CLOSE WORKING RELATIONSHIP ON PROJECTS WITH ABB, YASKAWA, VAN HOEK & FANUC. WE'VE ALSO WORKED CLOSELY WITH ABB ON PROJECTS INTEGRATING SOME OF OUR MACHINES WITH THEIR ROBOTS IN THE PAST.

CUSTOM MACHINE DESIGN

MOST OF OUR CLIENT'S NEEDS ARE CUSTOM DESIGNED, DEVELOPED, AND MANUFACTURED IN-HOUSE. WITH COMBINED PLC EXPERIENCE OF MORE THAN 60 YEARS, OUR PLC PROGRAMMERS ARE ON TOP OF THEIR GAME AND CAN PROVIDE A SOLUTION FOR ANY CHALLENGE THAT WE MAY ENCOUNTER. WE DESIGN, BUILD AND PROGRAM THE MACHINE ACCORDING TO THE CLIENT'S SPECIFICATIONS AND STANDARDS. WE ALSO IMPLEMENT THE LATEST SAFETY STANDARDS ON ALL OUR MACHINES FOR THE SAFETY PURPOSE OF THE OPERATORS. WE ALSO DEVELOP AND INSTALL TRACK AND TRACE SYSTEMS FOR OUR CLIENTS ACCORDING TO THEIR NEEDS AND THE PURPOSE THEY NEED THE SYSTEM FOR.



HYDRAULIC PRESSES

WE PARTNERED UP WITH ONE OF THE WORLD'S LEADING GERMAN HYDRAULIC PRESS MANUFACTURERS, JH HOLLMANN, TO DELIVER QUALITY PRESSES THAT EXCEED OUR CLIENT'S EXPECTATIONS. WE CAN SUPPLY FROM 50T UP TO 2500T PRESSES STRAIGHT FROM GERMANY, WHERE THEY WERE DESIGNED AND BUILT ACCORDING TO GERMAN STANDARDS, AT A VERY COST COMPETITIVE PRICE. ALL THE PLC AND HMI PROGRAMMING FOR THE PRESSES ARE DONE BY US, WHICH MEANS THAT WE CAN GIVE LOCAL SUPPORT ON FAULT-FINDING, AS WELL AS ANY MODIFICATIONS THAT MAY BE REQUIRED BY THE CUSTOMER.

FULLY INTEGRATED SYSTEMS

WE ARE SYSTEM INTEGRATORS FOR COMPANIES LIKE SICK AUTOMATION, FESTO (ALSO LOCAL PARTNERS OF FESTO) AND SEW EURODRIVE. OUR INTEGRATORS ARE CONTINUALLY TRAINED ON THE PRODUCTS SO THAT WE CAN OFFER SOLUTIONS TO OUR CLIENTS AS FAST AS POSSIBLE. NOT ONLY ARE WE SYSTEM INTEGRATORS FOR THESE COMPANIES, BUT WE ARE ALSO DISTRIBUTORS FOR THEIR PRODUCTS, WITH A WIDE VARIETY OF THEIR PRODUCTS ON OUR SHELVES. THIS MEANS THAT WE CAN REACT FASTER TO BREAKDOWNS, MINIMIZING PRODUCTION DOWNTIME.

PIPPING INSTALLATIONS

WE ALSO DO ALL KINDS OF PIPING INSTALLATIONS, WATER LINES, CHILLED WATER LINES, CHEMICAL LINES, GAS LINES AND AIRLINES ACCORDING TO SANS STANDARDS. A CERTIFICATE OF COMPLIANCE (C.O.C) WILL BE PROVIDED FOR INSTALLATIONS.

WE DO COPPER PIPES, PVC PIPES, UPVC PIPES, GALVANIZED PIPES, MILD STEEL PIPES, STAINLESS STEEL PIPES AND MANY MORE, PIPE CAN BE WELDED, BOLTED WITH FLANGES, AND THREADED ALL DEPENDING ON THE CUSTOMER'S NEEDS. FLUSHING OF THE PIPELINES WILL ALSO BE DONE TO MAKE SURE THAT WE DO NOT DAMAGE ANY OF OUR CLIENT'S EQUIPMENT WHEN OPENING THE PIPELINES. PRESSURE TESTS WILL ALSO BE DONE ON THE PIPELINES WHEN NEEDED WITH THE CORRECT CERTIFICATION PROVIDED.



VISION SYSTEMS

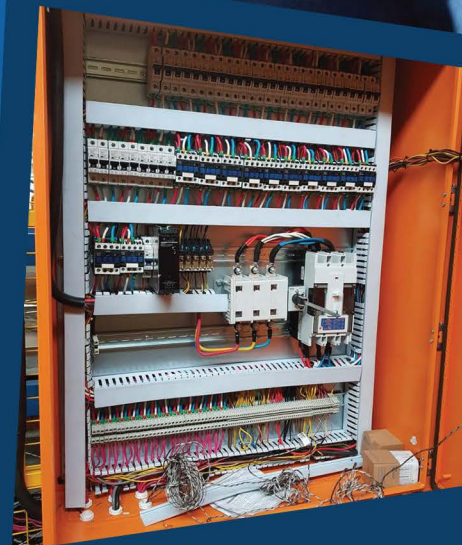
NOWADAYS MORE AND MORE COMPANIES TURN TO VISION SYSTEMS FOR THEIR QUALITY AND INSPECTION NEEDS. WE HAVE PARTNERED UP WITH SICK AUTOMATION TO DEVELOP QUALITY ASSURANCE CHECKING SYSTEMS ACCORDING TO THE CLIENT'S NEEDS AND WITH COGNEX FOR THE MORE COMPLEX SYSTEMS. THESE SYSTEMS CAN CHECK FOR DIFFERENT PART COLOURS, SHAPES, BARCODES, MATERIALS, AND IF ALL PARTS WERE ASSEMBLED.

ELECTRICAL RETICULATION

RANGING FROM CABLE TRAY INSTALLATIONS, POWER TO MACHINES, BUILD AND WIRE OF DISTRIBUTION BOARDS, AND SUBSTATIONS TO COMPLETE LINE INSTALLATIONS OUR ELECTRICAL WORK IS ON A SANS STANDARD. A CERTIFICATE OF COMPLIANCE (C.O.C) WILL BE PROVIDED FOR OUR ELECTRICAL INSTALLATIONS. WE ALSO DO POWER FACTOR UNITS AND COST SAVING ON YOUR ELECTRICAL BILL (GREEN IS THE WAY TO GO) AND NO ELECTRICAL INSTALLATION IS TOO BIG OR TOO SMALL FOR US.

PANEL DESIGN AND SCHEMATICS

OUR PANEL BUILDING AND SCHEMATIC DRAWINGS TOOK YEARS OF EXPERIENCE TO PERFECT. A PROJECT'S HEART IS THE ELECTRICAL PANEL, AND A NEAT PANEL MAKES FAULT FINDING MUCH EASIER FOR OUR CLIENTS. WE MAKE USE OF E-PLAN SCHEMATIC DESIGN SOFTWARE TO PROVIDE OUR CLIENTS WITH EASY-TO-READ YET UP TO INTERNATIONAL STANDARDS ELECTRICAL DRAWINGS. WITH E-PLAN'S NEWEST SOFTWARE, THERE IS NO MORE NEED FOR FILES AND FILES OF ELECTRICAL DRAWINGS THAT HAVE TO BE CARRIED AROUND, WHICH ARE USUALLY LOST OR MISSING. THE ELECTRICAL DRAWINGS CAN NOW BE PLACED ON THE COMPANY SERVER AND ACCESSED AS NEEDED FROM A TABLET WITH THEIR E-PLAN MOBILE VIEW SOFTWARE.



MECHANICAL AND ENGINEERING

WE HAVE AN EXCELLENT MECHANICAL AND ENGINEERING DEPARTMENT. WE PROVIDE MECHANICAL DESIGNS AS WELL AS MECHANICAL DRAWINGS FOR OUR MACHINES. ALL OUR MACHINING IS OF THE BEST STANDARD AND PRECISION ENGINEERING. A LOT OF RESEARCH GOES INTO OUR DESIGNS, AND WITH THE EXPERIENCE THAT WE HAVE, OUR CLIENTS KNOW THAT THEY WILL GET A SUPERBLY, QUALITY DESIGNED MACHINE OR SOLUTION.

WE ALSO PROVIDE

- CONSULTING**
- PROJECT MANAGEMENT**
- UNDERGROUND CABLE FAULT LOCATION**
- PANEL BUILDING**
- LOAD TEST**
- PICK BY LIGHT SYSTEM**
- ELECTRICAL SUPPLIES**
- AUTOMATION SUPPLIES**
- MIMIC PANELS**
- VACUUM SOLUTIONS**
- C.O.C**

HEALTH AND SAFETY

DUE TO THE NATURE OF OUR WORK TO BE EXECUTED, IT IS OF UTMOST IMPORTANCE FOR US TO PROTECT THE CLIENT AND OURSELVES AGAINST SAFETY INCIDENTS. EMENEM INDUSTRIAL THUS ADHERE TO THE LATEST HEALTH AND SAFETY REGULATIONS



MANAGEMENT TEAM

Rene Venter

Director

Millwright

PLC, HMI and SCADA Programmer

E-Plan Electrical Designs

Safety Development

Ernst Strydom

Managing Director

Millwright

Pneumatics

Project Manager

Consultation

Christiaan Liebenberg

Software/Electrical/Automation

Manager

PLC Programmer

Sick Automation Product Specialist

Sick Product Programmer

Robotics

Siemens Product Specialist

ADMIN & FINANCE TEAM

Carin Jacobs
PA to Mr Venter & Strydom
HR
Debtors & Creditors
Financial Office

Latasha van Wyngaardt
Administrative assistant
Procurement

Johan van Wyngaardt
SHE Representative
ISO 90001 Respresentitive

Hester De Wit
Procurement Specialist

Seeiso Rannyama
Marketing Admin
Graphic Desiginger
Motion graphic Designer
Digital Marketing
Web Design & maintenace
Social media manager

INSTALLATION TEAM

Riaan Pretorius
PLC Programme Developer
HMI Programme Developer
Sick Product Specialist
Solid Works Designer
Project Leader/Manager
Camera Specialist

Francois Van Jaarsfeld
Electrical Installations
Manager/Engineer
Millwright
Wireman's License (C.O.C)
Electrical Installations
Machine Installations
Hydraulics

Markus Venter
Millwright
PLC Programming
Camera Specialist
Program Developer

Gavin Wolmarans
Millwright
Control Pannell Building
Machine Installations
Electrical Installations

Theo Malan
Millwright Apprentice
Control Pannell Building
Machine Installations
Electrical Installations

Ruan Dellemyn
Millwright
Project Leader
Machine Installations
Robotics
Project Manager

Stephan Schutte
Millwright
Control Pannell Building
Machine Installations
Electrical Installations

Alwyn De Wet
PLC Programme Developer
Machine Installations
Electrical Installations

Johan Potgieter
Electrical Apprentice
Control Pannell Building
Machine Installations
Electrical Installations

Thinus Jacobs
Electrical Apprentice
Control Pannell Building
Machine Installations
Electrical Installations

Mpho Mabogoane
Driver
General Worker

AUTOMATION

INSTALLATION TEAM

Joel Tlou
General Worker

Phillemon Nyoni
Cleaner

Thabiso Mtimunye
Driver

INSTALLATION TEAM

Ettienne van Deventer

*Mechanical Engineer
Solid Works Designer
Design Specialist
Pneumatic Designer
Pneumatic Designer*

Edwin van Wyngaardt

*Boilermaker
General Supervisor
Machine Installations
On-Site supervisor
Project Leader*

Isaac Sithole

Welder (Gas metal arc, Gas tungsten, CO2)

Cofius Zevezeve

*General worker
Painter
Welder*

Kgothatso Chauke

General Worker

Phillimon Tlhapu

Site Supervisor

Hannes van Wyngaardt

*Workshop Supervisor
Project Leader
Manufacturing Supervisor*

Tshepo Mogotsi

Welder (Gas metal arc, Gas tungsten, CO2)

Hans Nagel

Fitter and Turner

Tuki Moremi

Fitter and Turner

John Kruger

*General worker
Painter*

Cocktail Murovhi

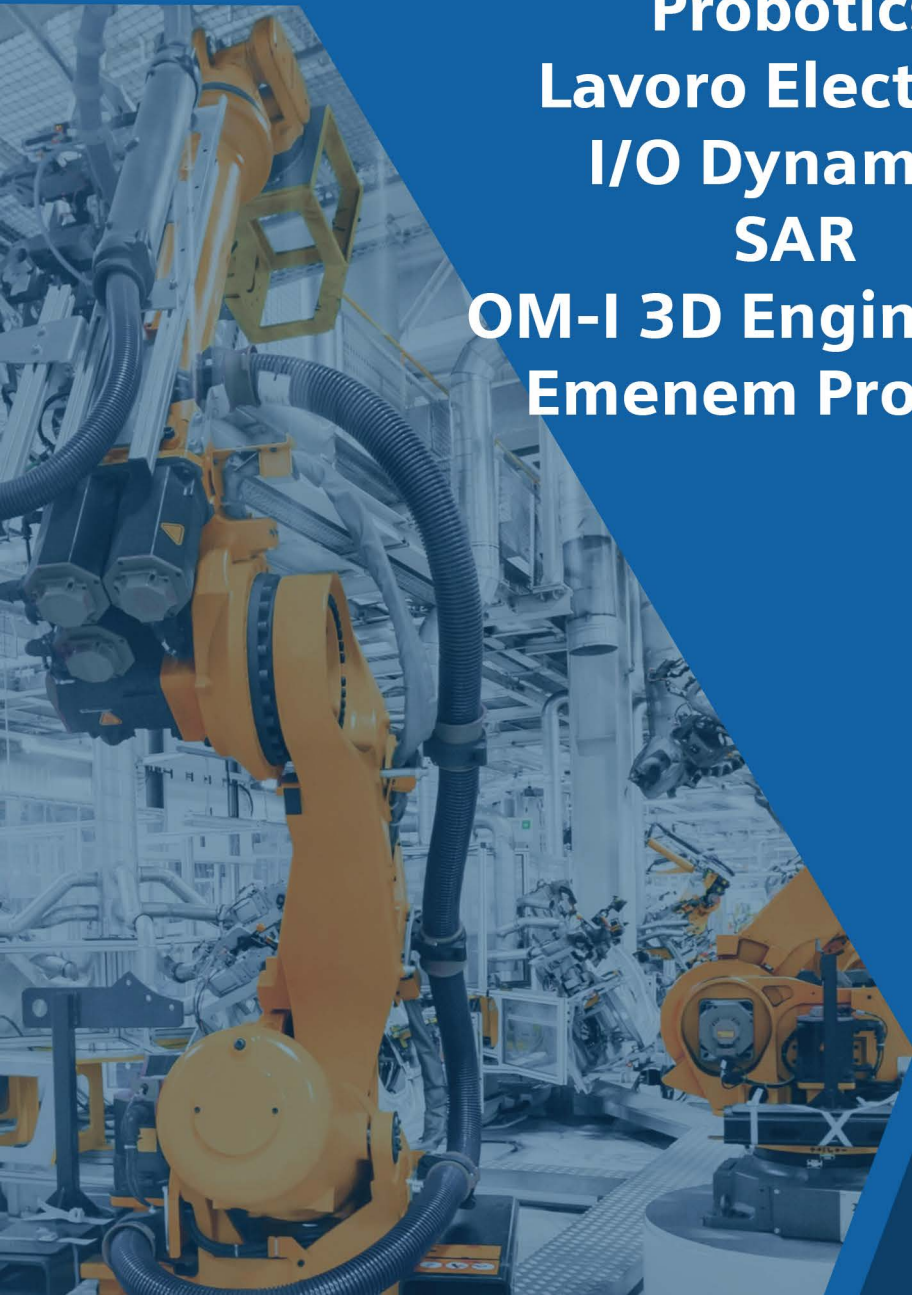
General Worker

PROJECT MANAGEMENT PARTNERS

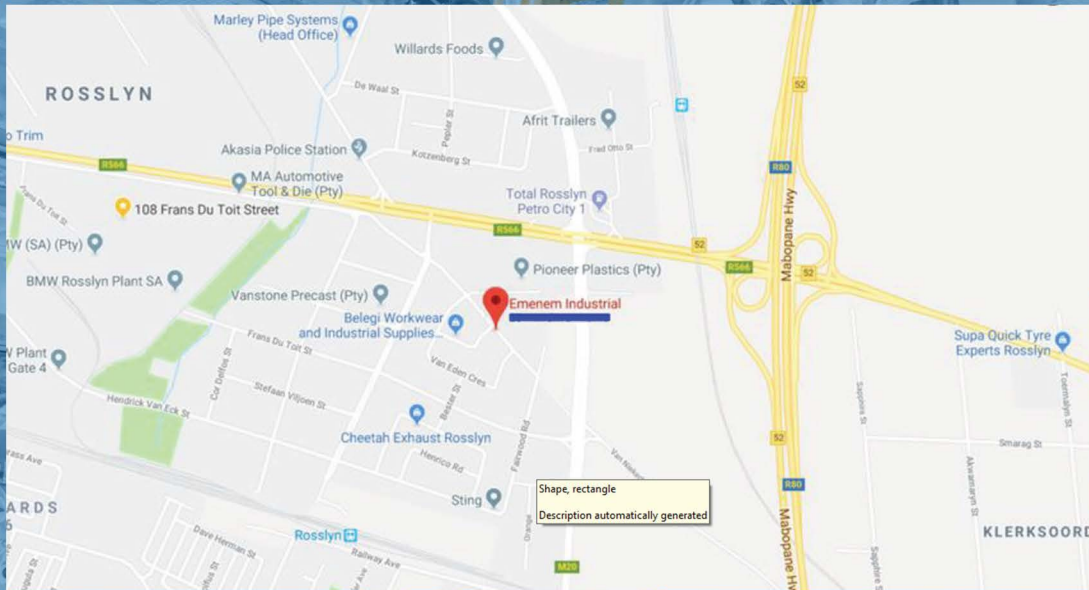
**JH Hollman
SB Electrical
W.LEE Ultraplast
S&S Projects
Probotics**

**Lavoro Electrical
I/O Dynamics
SAR**

**OM-I 3D Engineering
Emenem Projects**



CONTACT US



**OUR ADDRESS:
UNIT 1 AND 2 AQUILLA PARK
180 VAN NIEKERK STREET, CNR LEVER ROAD
ROSSLYN
0200
PRETORIA**

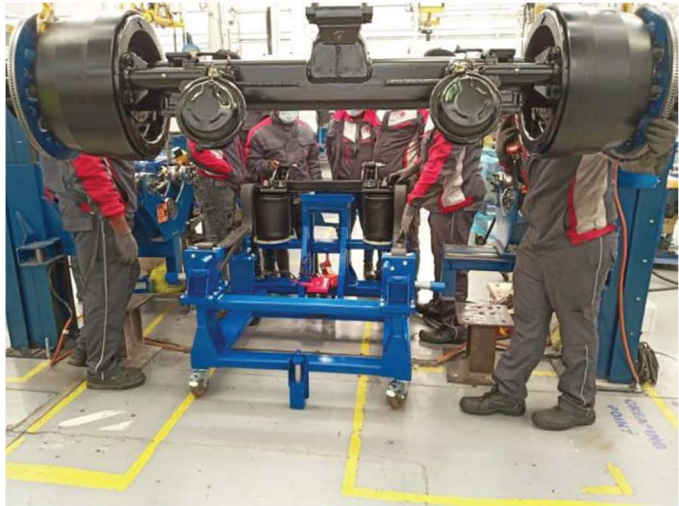
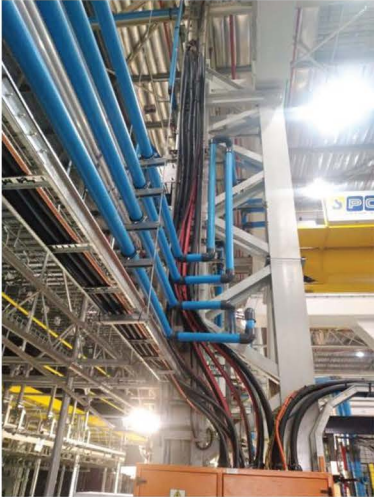
**ERNST STRYDOM
082 570 8093
ERNST@EMENEM.CO.ZA**

**CHRISTIAAN LIEBENBERG
083 321 0078
CHRIS@EMENEM.CO.ZA**

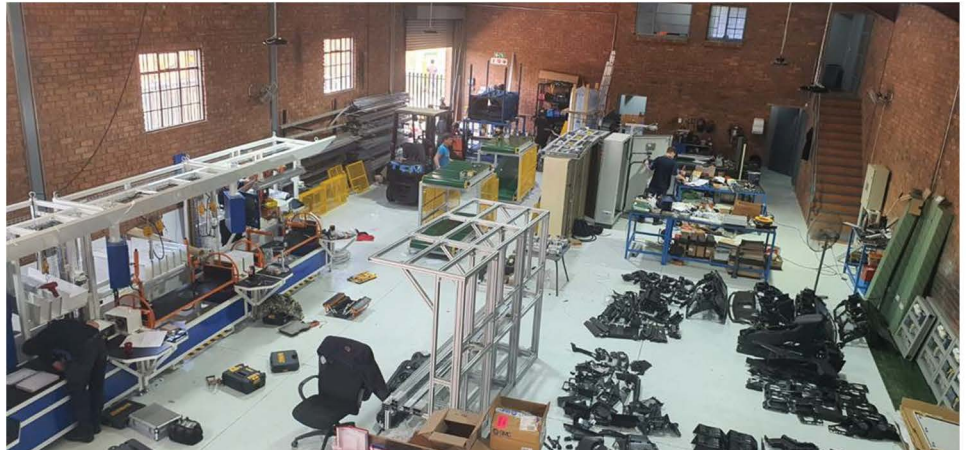
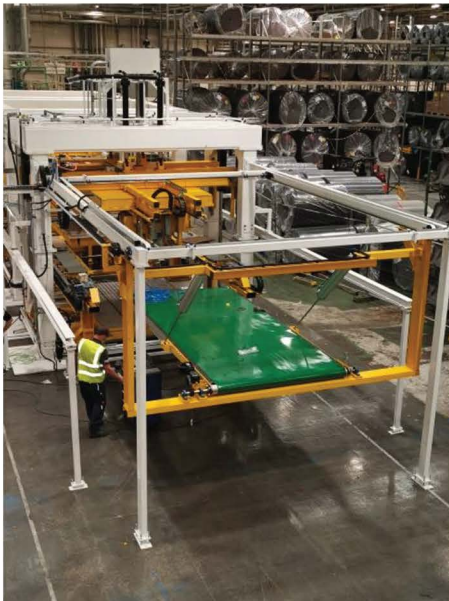
SOME OF OUR CLIENTS



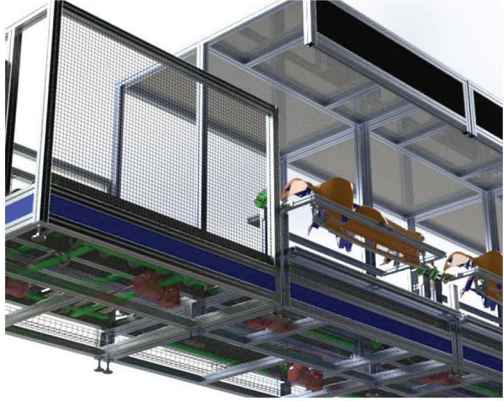
SOME OF OUR WORK



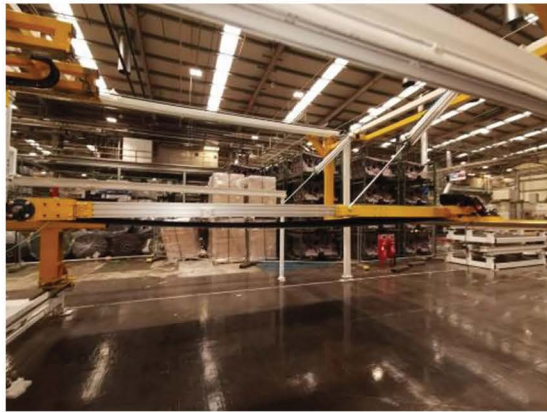
SOME OF OUR WORK



SOME OF OUR WORK



SOME OF OUR WORK



SOME OF OUR WORK

